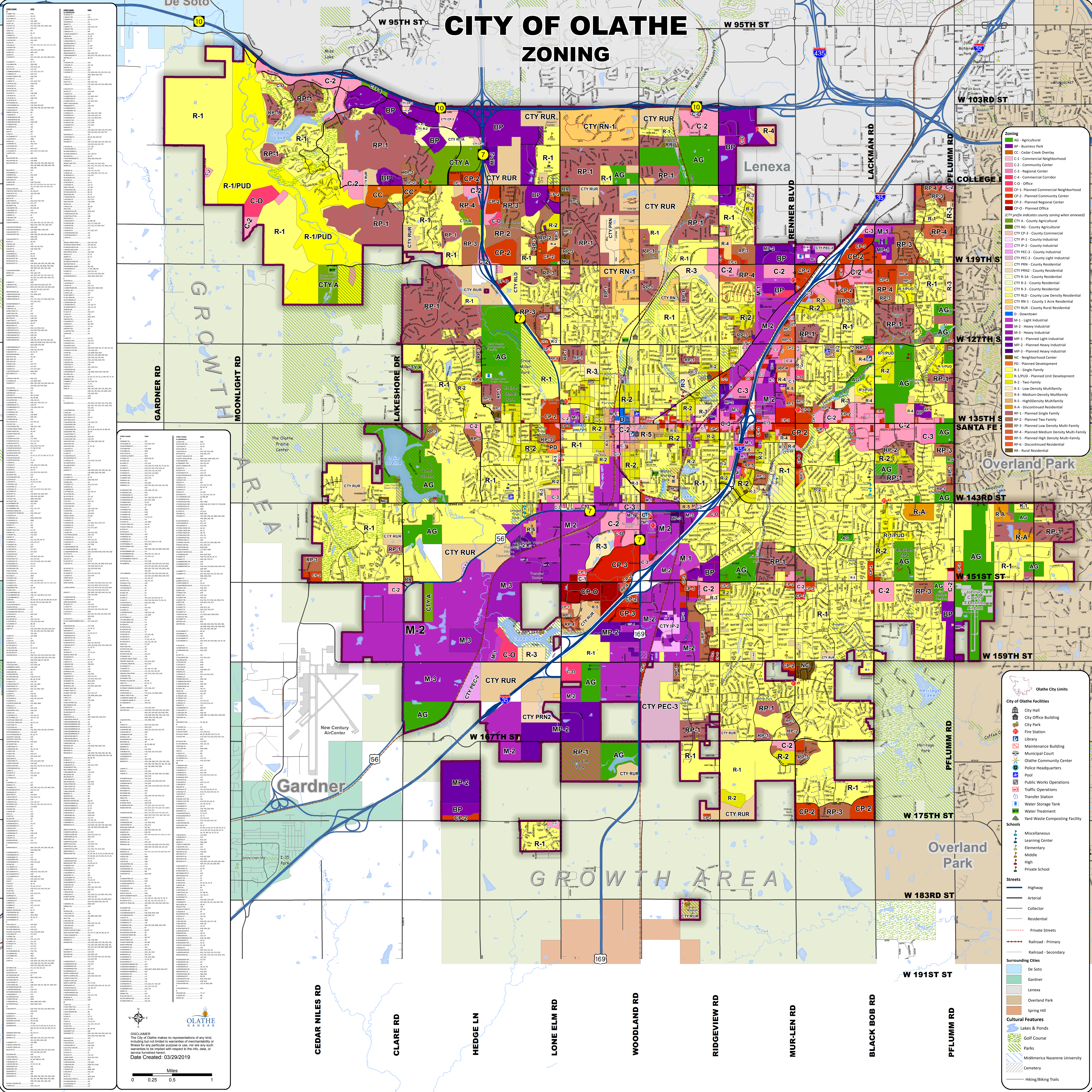


CITY OF OLATHE ZONING



Code	Description
AG	Agricultural
BP	Business Park
CC	Cedar Creek Overlay
C-1	Commercial Neighborhood
C-2	Community Center
C-3	Regional Center
C-4	Commercial Corridor
CP-1	Planned Commercial Neighborhood
CP-2	Planned Community Center
CP-3	Planned Regional Center
CP-O	Planned Office
CTY A	County Agricultural
CTY AG	County Agricultural
CTY C-2	County Commercial
CTY IP-1	County Industrial
CTY IP-2	County Industrial
CTY PEC-1	County Light Industrial
CTY PEC-2	County Light Industrial
CTY PEC-3	County Light Industrial
CTY PRN	County Residential
CTY PRN-1	County Residential
CTY PRN-2	County Residential
CTY PRN-3	County Residential
CTY PRN-4	County Residential
CTY PRN-5	County Residential
CTY PRN-6	County Residential
CTY PRN-7	County Residential
CTY PRN-8	County Residential
CTY PRN-9	County Residential
CTY PRN-10	County Residential
CTY PRN-11	County Residential
CTY PRN-12	County Residential
CTY PRN-13	County Residential
CTY PRN-14	County Residential
CTY PRN-15	County Residential
CTY PRN-16	County Residential
CTY PRN-17	County Residential
CTY PRN-18	County Residential
CTY PRN-19	County Residential
CTY PRN-20	County Residential
CTY PRN-21	County Residential
CTY PRN-22	County Residential
CTY PRN-23	County Residential
CTY PRN-24	County Residential
CTY PRN-25	County Residential
CTY PRN-26	County Residential
CTY PRN-27	County Residential
CTY PRN-28	County Residential
CTY PRN-29	County Residential
CTY PRN-30	County Residential
CTY PRN-31	County Residential
CTY PRN-32	County Residential
CTY PRN-33	County Residential
CTY PRN-34	County Residential
CTY PRN-35	County Residential
CTY PRN-36	County Residential
CTY PRN-37	County Residential
CTY PRN-38	County Residential
CTY PRN-39	County Residential
CTY PRN-40	County Residential
CTY PRN-41	County Residential
CTY PRN-42	County Residential
CTY PRN-43	County Residential
CTY PRN-44	County Residential
CTY PRN-45	County Residential
CTY PRN-46	County Residential
CTY PRN-47	County Residential
CTY PRN-48	County Residential
CTY PRN-49	County Residential
CTY PRN-50	County Residential
CTY PRN-51	County Residential
CTY PRN-52	County Residential
CTY PRN-53	County Residential
CTY PRN-54	County Residential
CTY PRN-55	County Residential
CTY PRN-56	County Residential
CTY PRN-57	County Residential
CTY PRN-58	County Residential
CTY PRN-59	County Residential
CTY PRN-60	County Residential
CTY PRN-61	County Residential
CTY PRN-62	County Residential
CTY PRN-63	County Residential
CTY PRN-64	County Residential
CTY PRN-65	County Residential
CTY PRN-66	County Residential
CTY PRN-67	County Residential
CTY PRN-68	County Residential
CTY PRN-69	County Residential
CTY PRN-70	County Residential
CTY PRN-71	County Residential
CTY PRN-72	County Residential
CTY PRN-73	County Residential
CTY PRN-74	County Residential
CTY PRN-75	County Residential
CTY PRN-76	County Residential
CTY PRN-77	County Residential
CTY PRN-78	County Residential
CTY PRN-79	County Residential
CTY PRN-80	County Residential
CTY PRN-81	County Residential
CTY PRN-82	County Residential
CTY PRN-83	County Residential
CTY PRN-84	County Residential
CTY PRN-85	County Residential
CTY PRN-86	County Residential
CTY PRN-87	County Residential
CTY PRN-88	County Residential
CTY PRN-89	County Residential
CTY PRN-90	County Residential
CTY PRN-91	County Residential
CTY PRN-92	County Residential
CTY PRN-93	County Residential
CTY PRN-94	County Residential
CTY PRN-95	County Residential
CTY PRN-96	County Residential
CTY PRN-97	County Residential
CTY PRN-98	County Residential
CTY PRN-99	County Residential
CTY PRN-100	County Residential

OLATHE KANSAS

DISCLAIMER: The City of Olathe makes no representations of any kind, including but not limited to warranties of merchantability or fitness for any particular purpose or use, for any goods, services, or information furnished hereon. The City of Olathe makes no warranty with respect to the info, data, or graphics furnished hereon.

Date Created: 03/29/2019

Miles
0 0.25 0.5 1

Zoning

- AG - Agricultural
- BP - Business Park
- CC - Cedar Creek Overlay
- C-1 - Commercial Neighborhood
- C-2 - Community Center
- C-3 - Regional Center
- C-4 - Commercial Corridor
- CP-1 - Planned Commercial Neighborhood
- CP-2 - Planned Community Center
- CP-3 - Planned Regional Center
- CP-O - Planned Office
- (CTY prefix indicates county zoning when annexed)
- CTY A - County Agricultural
- CTY AG - County Agricultural
- CTY C-2 - County Commercial
- CTY IP-1 - County Industrial
- CTY IP-2 - County Industrial
- CTY PEC-1 - County Light Industrial
- CTY PEC-2 - County Light Industrial
- CTY PEC-3 - County Light Industrial
- CTY PRN - County Residential
- CTY PRN-1 - County Residential
- CTY PRN-2 - County Residential
- CTY PRN-3 - County Residential
- CTY PRN-4 - County Residential
- CTY PRN-5 - County Residential
- CTY PRN-6 - County Residential
- CTY PRN-7 - County Residential
- CTY PRN-8 - County Residential
- CTY PRN-9 - County Residential
- CTY PRN-10 - County Residential
- CTY PRN-11 - County Residential
- CTY PRN-12 - County Residential
- CTY PRN-13 - County Residential
- CTY PRN-14 - County Residential
- CTY PRN-15 - County Residential
- CTY PRN-16 - County Residential
- CTY PRN-17 - County Residential
- CTY PRN-18 - County Residential
- CTY PRN-19 - County Residential
- CTY PRN-20 - County Residential
- CTY PRN-21 - County Residential
- CTY PRN-22 - County Residential
- CTY PRN-23 - County Residential
- CTY PRN-24 - County Residential
- CTY PRN-25 - County Residential
- CTY PRN-26 - County Residential
- CTY PRN-27 - County Residential
- CTY PRN-28 - County Residential
- CTY PRN-29 - County Residential
- CTY PRN-30 - County Residential
- CTY PRN-31 - County Residential
- CTY PRN-32 - County Residential
- CTY PRN-33 - County Residential
- CTY PRN-34 - County Residential
- CTY PRN-35 - County Residential
- CTY PRN-36 - County Residential
- CTY PRN-37 - County Residential
- CTY PRN-38 - County Residential
- CTY PRN-39 - County Residential
- CTY PRN-40 - County Residential
- CTY PRN-41 - County Residential
- CTY PRN-42 - County Residential
- CTY PRN-43 - County Residential
- CTY PRN-44 - County Residential
- CTY PRN-45 - County Residential
- CTY PRN-46 - County Residential
- CTY PRN-47 - County Residential
- CTY PRN-48 - County Residential
- CTY PRN-49 - County Residential
- CTY PRN-50 - County Residential
- CTY PRN-51 - County Residential
- CTY PRN-52 - County Residential
- CTY PRN-53 - County Residential
- CTY PRN-54 - County Residential
- CTY PRN-55 - County Residential
- CTY PRN-56 - County Residential
- CTY PRN-57 - County Residential
- CTY PRN-58 - County Residential
- CTY PRN-59 - County Residential
- CTY PRN-60 - County Residential
- CTY PRN-61 - County Residential
- CTY PRN-62 - County Residential
- CTY PRN-63 - County Residential
- CTY PRN-64 - County Residential
- CTY PRN-65 - County Residential
- CTY PRN-66 - County Residential
- CTY PRN-67 - County Residential
- CTY PRN-68 - County Residential
- CTY PRN-69 - County Residential
- CTY PRN-70 - County Residential
- CTY PRN-71 - County Residential
- CTY PRN-72 - County Residential
- CTY PRN-73 - County Residential
- CTY PRN-74 - County Residential
- CTY PRN-75 - County Residential
- CTY PRN-76 - County Residential
- CTY PRN-77 - County Residential
- CTY PRN-78 - County Residential
- CTY PRN-79 - County Residential
- CTY PRN-80 - County Residential
- CTY PRN-81 - County Residential
- CTY PRN-82 - County Residential
- CTY PRN-83 - County Residential
- CTY PRN-84 - County Residential
- CTY PRN-85 - County Residential
- CTY PRN-86 - County Residential
- CTY PRN-87 - County Residential
- CTY PRN-88 - County Residential
- CTY PRN-89 - County Residential
- CTY PRN-90 - County Residential
- CTY PRN-91 - County Residential
- CTY PRN-92 - County Residential
- CTY PRN-93 - County Residential
- CTY PRN-94 - County Residential
- CTY PRN-95 - County Residential
- CTY PRN-96 - County Residential
- CTY PRN-97 - County Residential
- CTY PRN-98 - County Residential
- CTY PRN-99 - County Residential
- CTY PRN-100 - County Residential

City of Olathe Facilities

- City Hall
- City Office Building
- City Park
- Fire Station
- Library
- Maintenance Building
- Municipal Court
- Olathe Community Center
- Police Headquarters
- Pool
- Public Works Operations
- Traffic Operations
- Transfer Station
- Water Storage Tank
- Water Treatment
- Yard Waste Composting Facility

Schools

- Miscellaneous
- Learning Center
- Elementary
- Middle
- High
- Private School

Streets

- Highway
- Arterial
- Collector
- Residential
- Private Streets
- Railroad - Primary
- Railroad - Secondary

Surrounding Cities

- De Soto
- Gardner
- Lenexa
- Overland Park
- Spring Hill

Cultural Features

- Lakes & Ponds
- Golf Course
- Parks
- MidAmerica Nazarene University
- Cemetery
- Hiking/Biking Trails