

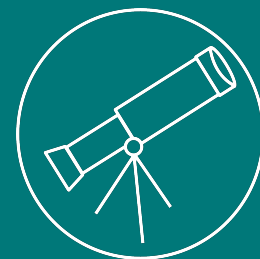


Community Cohesion and Safety

From 2007 to 2010, there were roughly 12 deaths from violence per 100,000 residents, which is double the nationwide average. Within New Haven, there are stark disparities in the geographic distribution of violent crime as well as in the distribution of deaths from firearms among different racial/ethnic groups, with Black or Hispanic males bearing the brunt of the burden.¹ Low income neighborhoods are disproportionately affected by violent crime, and the majority of adults in these neighborhoods report feeling it is unsafe to walk around at night in their communities. In these same neighborhoods, only 10% of surveyed residents “strongly agree” that their neighbors can be trusted.²

The efforts of the CTP will focus on reducing crime through community policing and restorative practices that engage at-risk individuals, and strengthening the community to improve cohesion and trust. Community-based policing is predicated on the idea that police must be partners with the community to prevent and solve crimes. New Haven’s crime reduction strategy is based on the Operation Ceasefire model that has successfully reduced homicides and shootings in many cities. The revival of community policing in the last two years has already led to significant decreases in crime.

Community strengthening efforts will revolve around the strategy known as asset-based community development. New Haven’s existing Community Management Teams and programs like the Community Foundation for Greater New Haven’s Neighborhood Leadership Program will be utilized as points of contact with the community. The CTP will augment these programs to enhance the ability of neighborhoods to engage in grassroots organization, mobilize around community issues, and capitalize on existing neighborhood assets and strengths.



Vision:

All neighborhoods will be safe, cohesive, free of violent crime, and capable of supporting their residents' success



2020 Targets:

Reduce crime:

Reduce violent crime rate to the statewide average of 3 crimes/1,000 residents

Reconnect residents:

Reduce recidivism rate for adults by 25%

Build trust:

Increase percentage of adults who report trusting their neighbors by 50%

Engage youth:

Engage 800 at-risk youth in YouthSTAT

Strategy Roadmap: Connect Communities



Goal: All residents are part of trusting and connected communities

		Strategies		
		Identify and empower neighborhood leaders and networks that can bring the community together and effect positive change	Train and equip neighborhood leaders and networks with leadership training, mini-grants, and technology tools	Support community efforts to produce neighborhood festivals and events that build social cohesion, and develop local institutions as community hubs
Citywide	Need Community forums that promote high levels of connectedness and mutual trust and build residents' capacities to improve local quality of life.	Identify 5 new natural leaders from each neighborhood annually Transform New Haven's Community Management Teams into forums for building civic capacity, making valuable connections across sectors, and developing community policing models tailored to local needs	Double the number of slots in community leadership programs like the CFGNH Neighborhood Leadership Program Provide \$1,000 seed grants to each CMT annually	Hold two major events and two minor events in each neighborhood annually Support and expand local institutions such as the New Haven Free Public Libraries that serve as community meeting places, technology access points, sources of education, and safe havens for all residents
	Equity Focus 42% of adults in high-income neighborhoods "strongly agree" that their neighbors can be trusted, compared to only 10% of adults in low-income neighborhoods. ³	<i>Target outreach in neighborhoods that report low trust and low community engagement</i>	<i>Focus recruitment for leadership trainings in low opportunity neighborhoods</i>	<i>Support the establishment of yearly or seasonally regular events in neighborhoods that traditionally have none</i> <i>Influence planners of successful community-wide events to reach out to neighborhoods unable to host such events and collaborate with residents with leadership skills and other talents from those places</i>
2016: First Year Action Steps		Support CMTs in developing and implementing a new set of operating standards	Hold a citywide Community Management Team leader retreat/training session	Publicize online calendar of New Haven community events Create event toolkit and offer training on production strategies Extend all branch library hours of service to match the Ives Main Library

Strategy Roadmap: Fight Crime



Goal: All residents are safe, and all formerly incarcerated residents are re-integrated into their communities

		Strategies		
		Help establish community policing by building partnerships between residents, community organizations, and the NHPD	Provide support for employment, housing, and other needs for residents reentering from prison	Reconnect at-risk youth with individualized coaching, support, and access to services through community-based initiatives
	Need			
Citywide	<p>In New Haven, there are 12 deaths from violence per 100,000 residents. This is double the national average.⁴</p> <p>1,200 prisoners are released from CT state prisons annually, and 50-100 individuals return to New Haven each month. They need housing, employment, mental health, and primary care services.</p>	Increase the number of police officers assigned to long-term walking beats to allow for the development of trusting relationships with residents	Increase the number of adults reached by Fresh Start by 25% each year	Increase the number of youth reached by YouthSTAT by 25% each year
Equity Focus	<p><i>Violent crime rates in low opportunity neighborhoods range from 18-30 crimes per 1000 residents, compared to 2-8 crimes per 1000 residents in other neighborhoods.⁵</i></p>	<p><i>Emphasize the development of positive relationships between community and police in low opportunity neighborhoods</i></p>	<p><i>Support formerly incarcerated residents to reduce recidivism and positively reengage them in their communities</i></p>	<p><i>Target outreach to at-risk youth from low income neighborhoods</i></p>
2016: First Year Action Steps		Convene Community-Police Relations Task Force to compile report of recommendations	Implement job center at Whalley Correctional Center	<p>Connect Street Outreach Workers to community organizations</p> <p>Expand restorative practices in schools through the Juvenile Review Board</p>